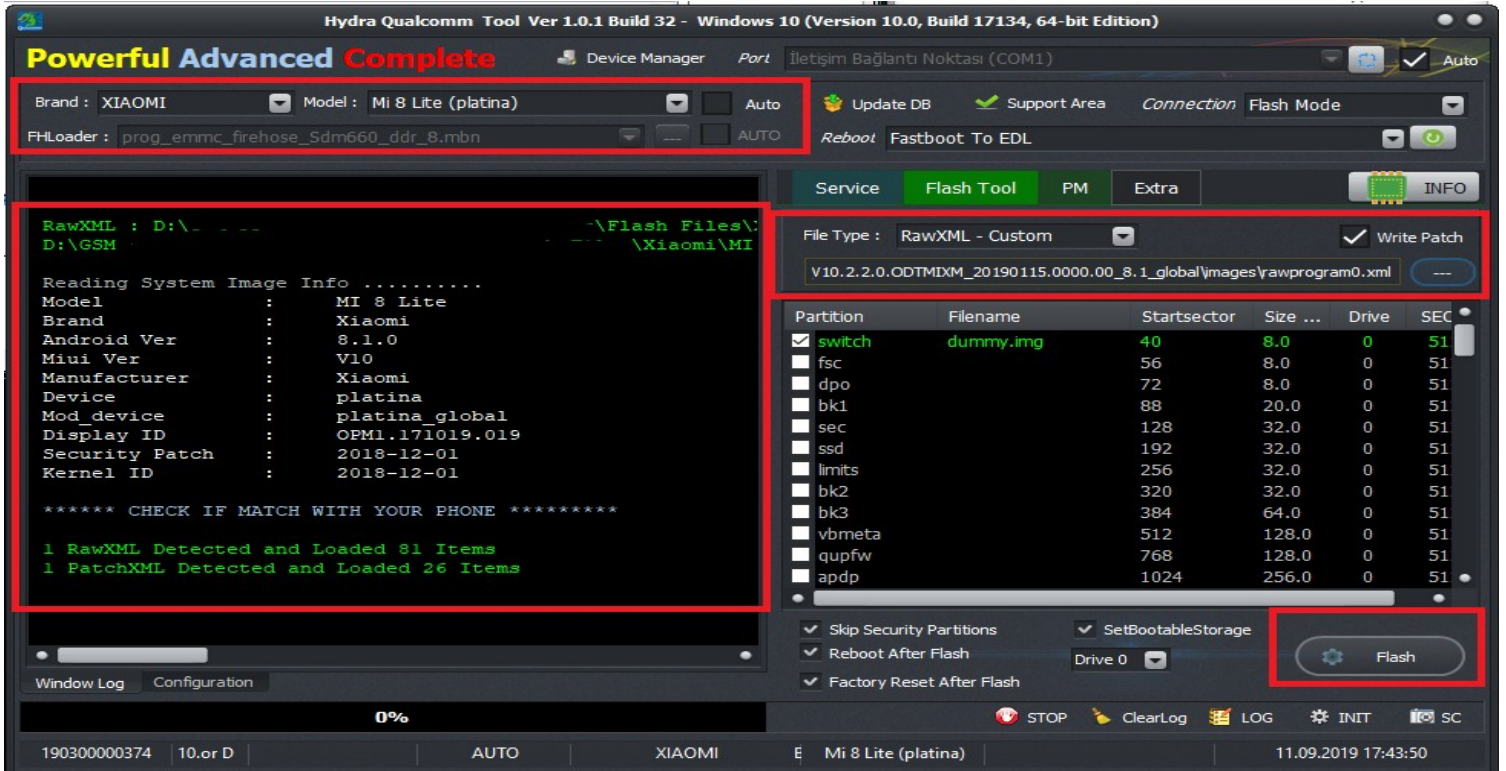


# How to Flash Qualcomm or Xiaomi at EDL Mode ?

Untick Auto Select Your brand and Model, You need Put device to EDL Mode First, Some devices Need Bootkeys Vol + and Vol -, Some devices need deep edl cable, Some devices need testpoint for force edl mode.....

I Will show you how to Flash Mi 8 Lite, For this need testpoint.

After Select Brand and Model for eMMC Chips Select RawXML-Custom and Tick Write Patch, for UFS Chips Select RawXML Auto if more than 1 rawprogram.xml Select Rawprogram0.xml and Patch0.xml it will show you information of flash file,



After Load Firmware, Click Excute For Flashing.

