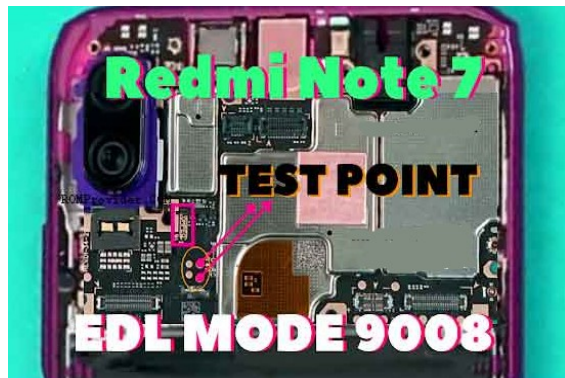


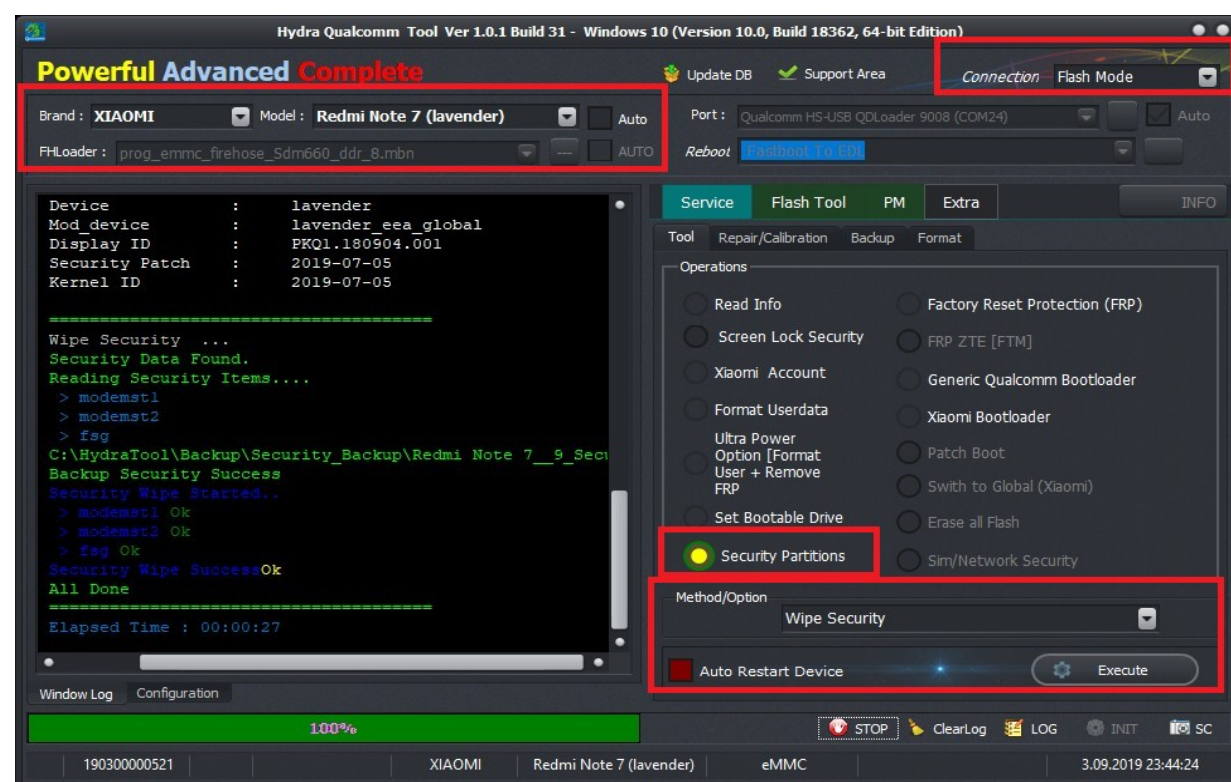
# How to Xiaomi Redmi Note 7 Repair IMEI Without Root and Unlock Bootloader ?

You need Dissassembly device and Put it to Flash mode its Mean QdLoader 9008 EDL Mode Some devices need doing Testpoint for force EDL mode,You can see TestPoint pics at Hydra TP Folder, Example of Redmi Note 7 TestPoint



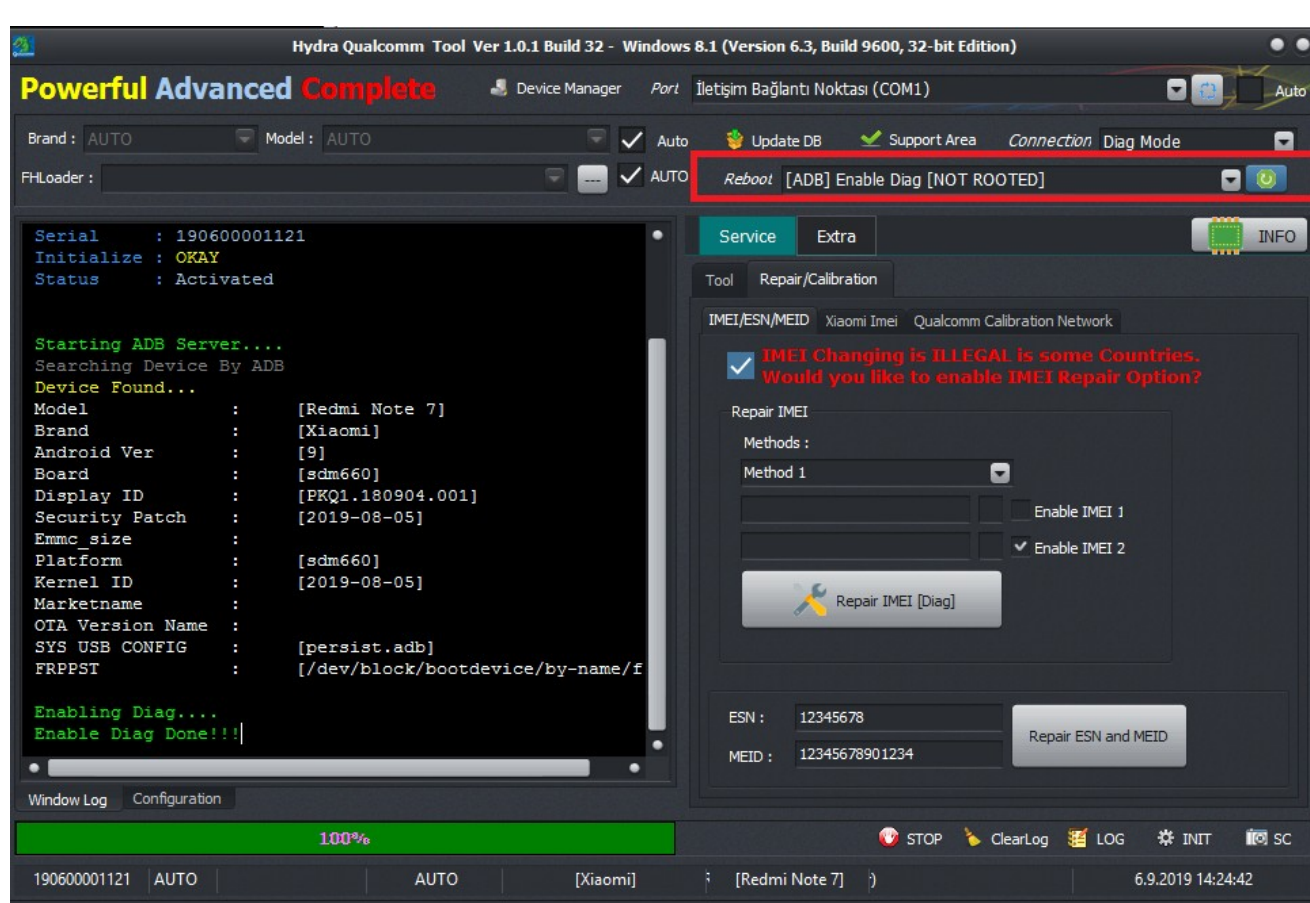
After Test Point you need see QdLoader 9008 driver at Device Manager

Run Qualcomm Module, Untick Auto and Select Brand and Model, Tick Wipe Security and You will see Security Options,There select Wipe Security and Click Excute, You need wipe security first

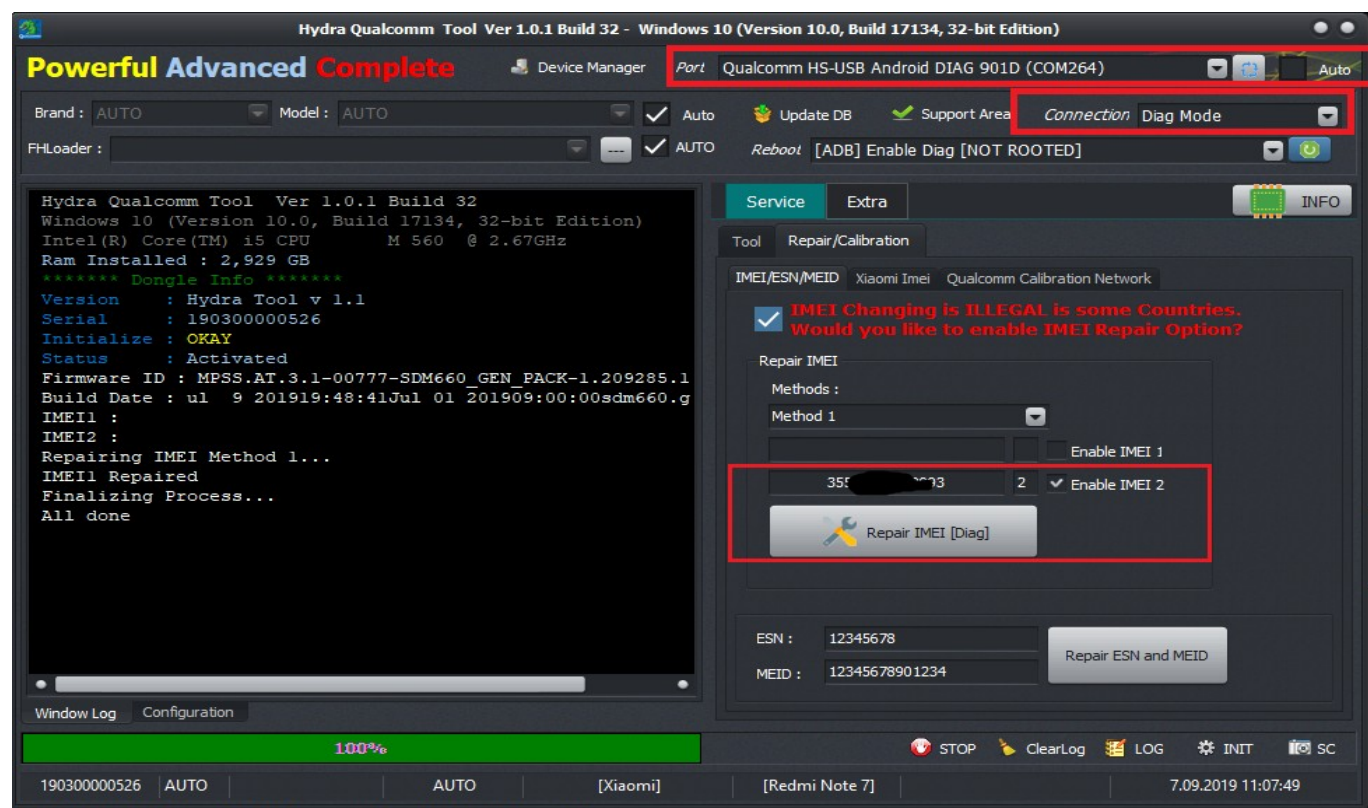


if your device is Micron Chip then will need Xiaomi Authorized Server,  
if you get request error, try to testpoint with battery.

**After Wipe security from Reboots Tab Select [ADB] Enable Diag (Non Rooted) Function then click button, it will active your diag, and you will need see diag port at Device Manager.**



**After enable diag from top right change connection as Diag Mode, Go to Repair/Calibration Tab, Go to IMEI/ESN/MEID Tab, Tick Enable IMEI 2 only, fill imei box, type 14 Digt imei, Select Diag port from port box, and Click Repair Button.**



**After Repair IMEI go to Support Area, QCN/Xiaomi/Redmi Note 7 Download Enginener QCN From there, and Restore device by Diag at Qualcomm Calbration Network Tab.**



# Powerful Advanced Complete

Device Manager

Port: Qualcomm HS-USB Android DIAG 901D (COM20)

Auto

Brand: XIAOMI

Model: Redmi Note 7 (lavender)

Auto

Update DB

Support Area

Connection: Diag Mode

FHLoader: prog\_emmc\_firehose\_Sdm660\_ddr\_8.mbn

AUTO

Reboot: [ADB] Enable Diag [NOT ROOTED]

```
Hydra Qualcomm Tool Ver 1.0.1 Build 32
Windows 7 Service Pack 1 (Version 6.1, Build 7601, 64-bit)
Intel(R) Core(TM) i7-4700MQ CPU @ 2.40GHz
Ram Installed : 7,918 GB
***** Dongle Info *****
Version : Hydra Tool v 1.1
Serial : 190700001257
Initialize : OKAY
Status : Activated

Selected Comport : [FOUND] (COM20)

Firmware ID : MPSS.AT.3.1-00777-SDM660_GEN_PACK-1.193652.1
Build Date : pr 23 201923:35:17Mar 26 201920:00:00sdm660.g
IMEI1 :
IMEI2 :

Sending SPC Code... OK
Restoring Qcn...
Restoring Qcn Success
Elapsed Time : 00:00:24
```

Service

Extra

INFO

Tool: Repair/Calibration

IMEI/ESN/MEID: Xiaomi Imei Qualcomm Calibration Network

QCN

Enable Multi Sim SPC: 000000

BACKUP QCN RESTORE QCN

Write IMEI in QCN

EQCNFile

IMEI - 1 Enable IMEI 1

IMEI - 2 Enable IMEI 2

Repair/Patch IMEI

Window Log Configuration

100%

STOP ClearLog LOG INIT SC

190700001257 | 10.or D | AUTO | [Xiaomi] | [Redmi Note 7] | eMMC | 07.09.2019 19:09:11

